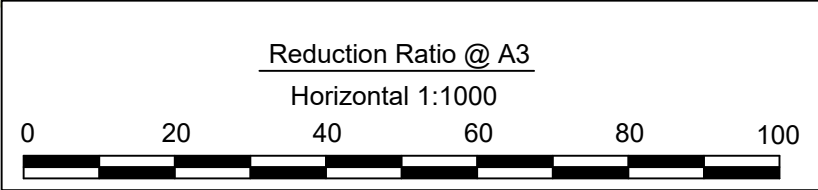
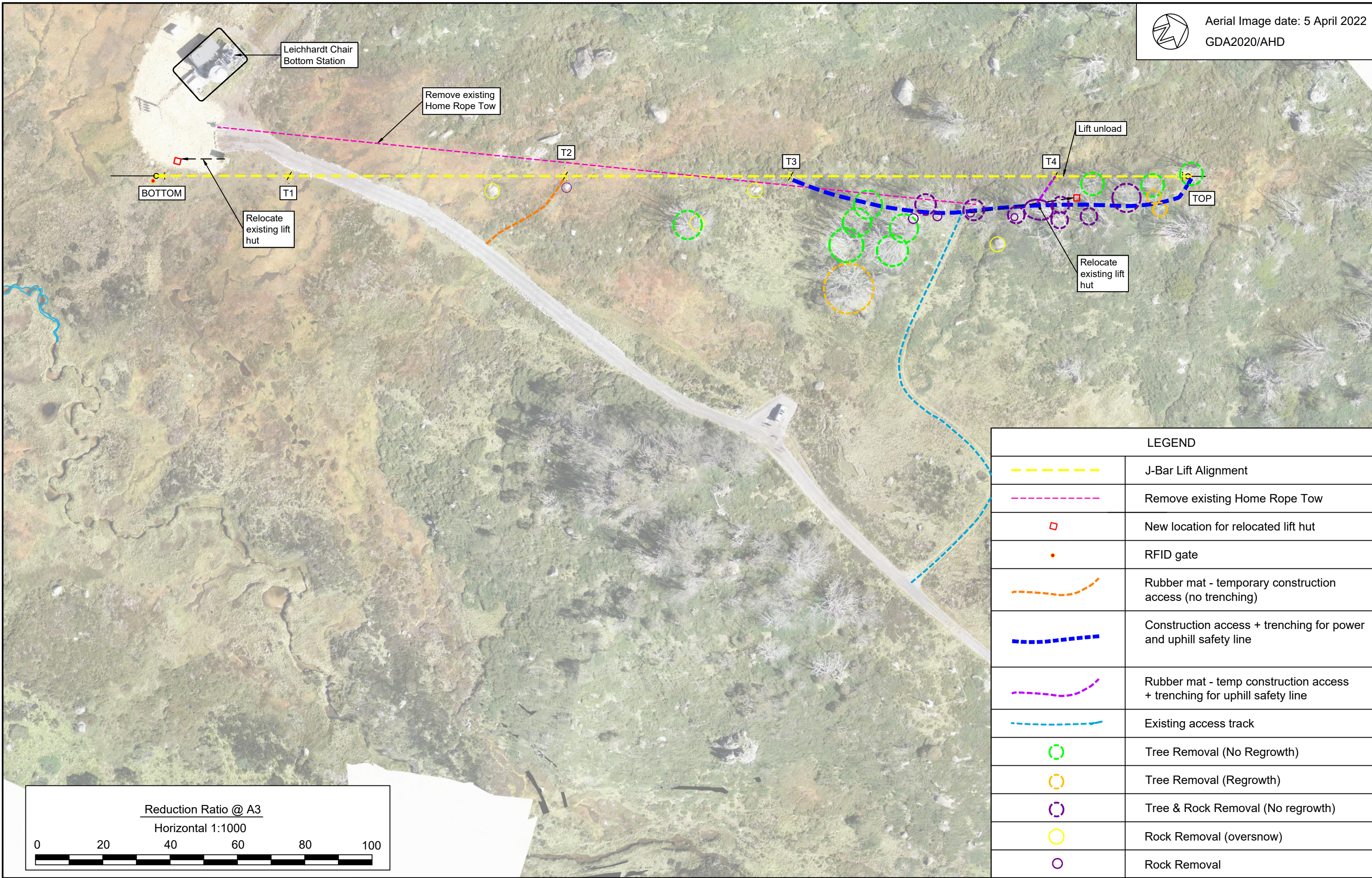




Aerial Image date: 5 April 2022
GDA2020/AHD



LEGEND	
	J-Bar Lift Alignment
	Remove existing Home Rope Tow
	New location for relocated lift hut
	RFID gate
	Rubber mat - temporary construction access (no trenching)
	Construction access + trenching for power and uphill safety line
	Rubber mat - temp construction access + trenching for uphill safety line
	Existing access track
	Tree Removal (No Regrowth)
	Tree Removal (Regrowth)
	Tree & Rock Removal (No regrowth)
	Rock Removal (oversnow)
	Rock Removal

Rev	Date	Description
B	07/07/2022	DA Submission

Leichhardt J-Bar, Perisher Ski Resort
Replacement of Home Rope Tow + Ancillary
Works

CLM CIVIL
CLM CIVIL Engineering
205 Bobundara Road
BERRIDALE NSW 2628
PH: 0427 886 623
E: greg@clmcivil.com.au

dabynep^{planning}

perisher

Client: Vail Resorts (Perisher)			
Plan - Overall	Status		
	DA Submission		
	Datum	Scale	Size
	MGA/AHD	1:1000	A3
Drawing Number		Sheet	Revision
U255-2		1 of 4	B



Leichhardt Chair
Bottom Station

Remove existing
Home Rope Tow

T2

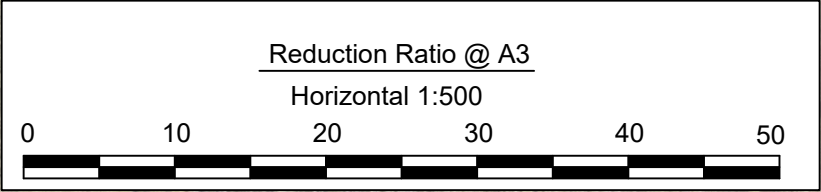
T3

BOTTOM

T1

Relocate
existing lift
hut

LEGEND	
	J-Bar Lift Alignment
	Remove existing Home Rope Tow
	New location for relocated lift hut
	RFID gate
	Rubber mat - temporary construction access (no trenching)
	Construction access + trenching for power and uphill safety line
	Rubber mat - temp construction access + trenching for uphill safety line
	Existing access track
	Tree Removal (No Regrowth)
	Tree Removal (Regrowth)
	Tree & Rock Removal (No regrowth)
	Rock Removal (oversnow)
	Rock Removal



Rev	Date	Description
B	07/07/2022	DA Submission

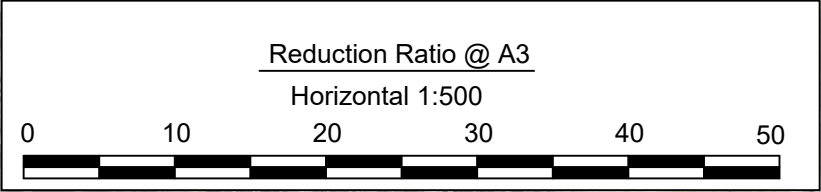
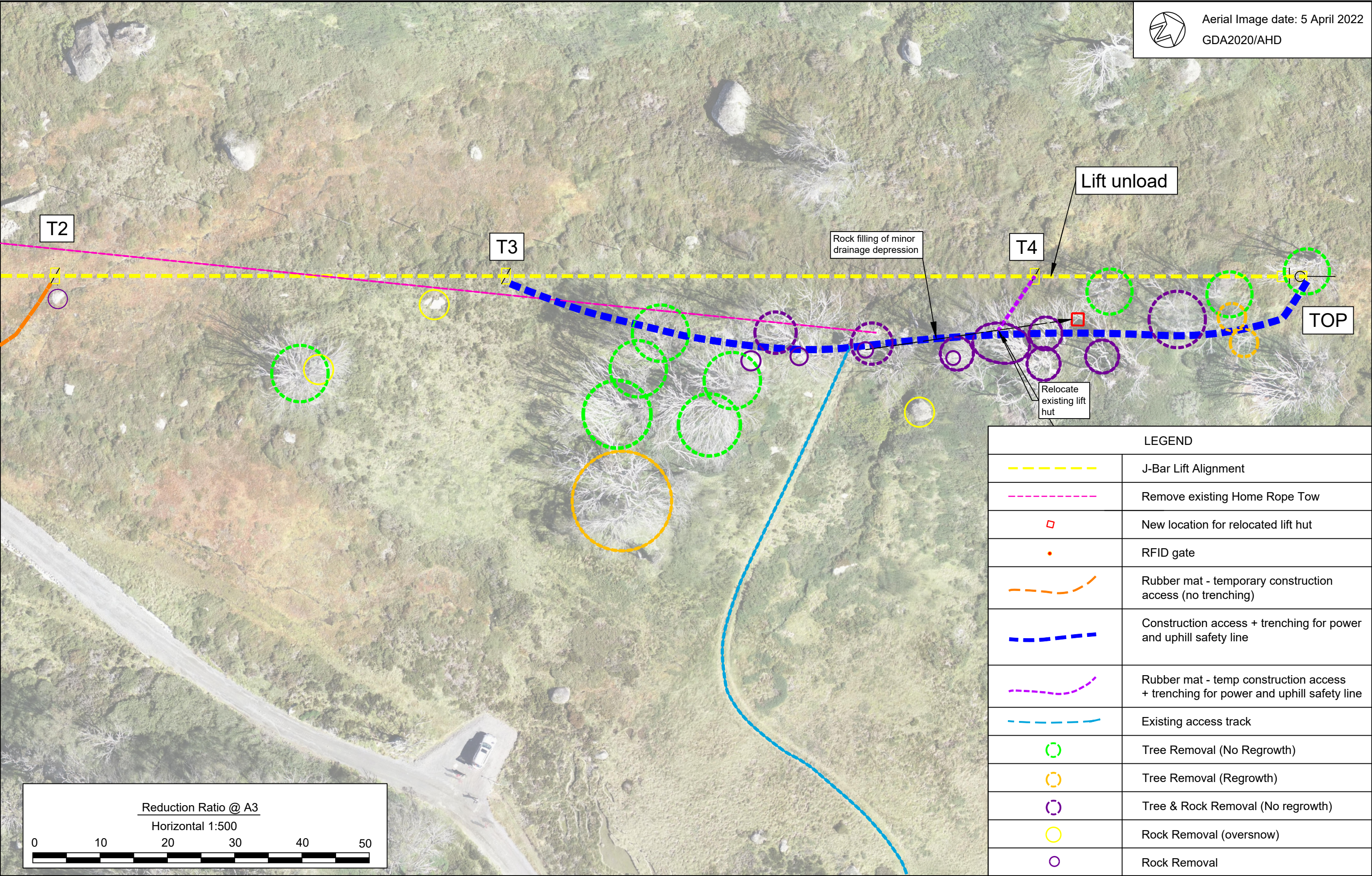
Leichhardt J-Bar, Perisher Ski Resort
Replacement of Home Rope Tow + Ancillary
Works

**CLM
civil**
CLM CIVIL Engineering
205 Bobundara Road
BERRIDALE NSW 2628
PH: 0427 886 623
E: greg@clmcivil.com.au

dabynep^{planning}

perisher

Client: Vail Resorts (Perisher)			
Plan - Bottom Station	Status: DA Submission		
	Datum	Scale	Size
	MGA/AHD	1:500	A3
	Drawing Number	Sheet	Revision
U255-2		2 of 4	B



LEGEND	
	J-Bar Lift Alignment
	Remove existing Home Rope Tow
	New location for relocated lift hut
	RFID gate
	Rubber mat - temporary construction access (no trenching)
	Construction access + trenching for power and uphill safety line
	Rubber mat - temp construction access + trenching for power and uphill safety line
	Existing access track
	Tree Removal (No Regrowth)
	Tree Removal (Regrowth)
	Tree & Rock Removal (No regrowth)
	Rock Removal (oversnow)
	Rock Removal

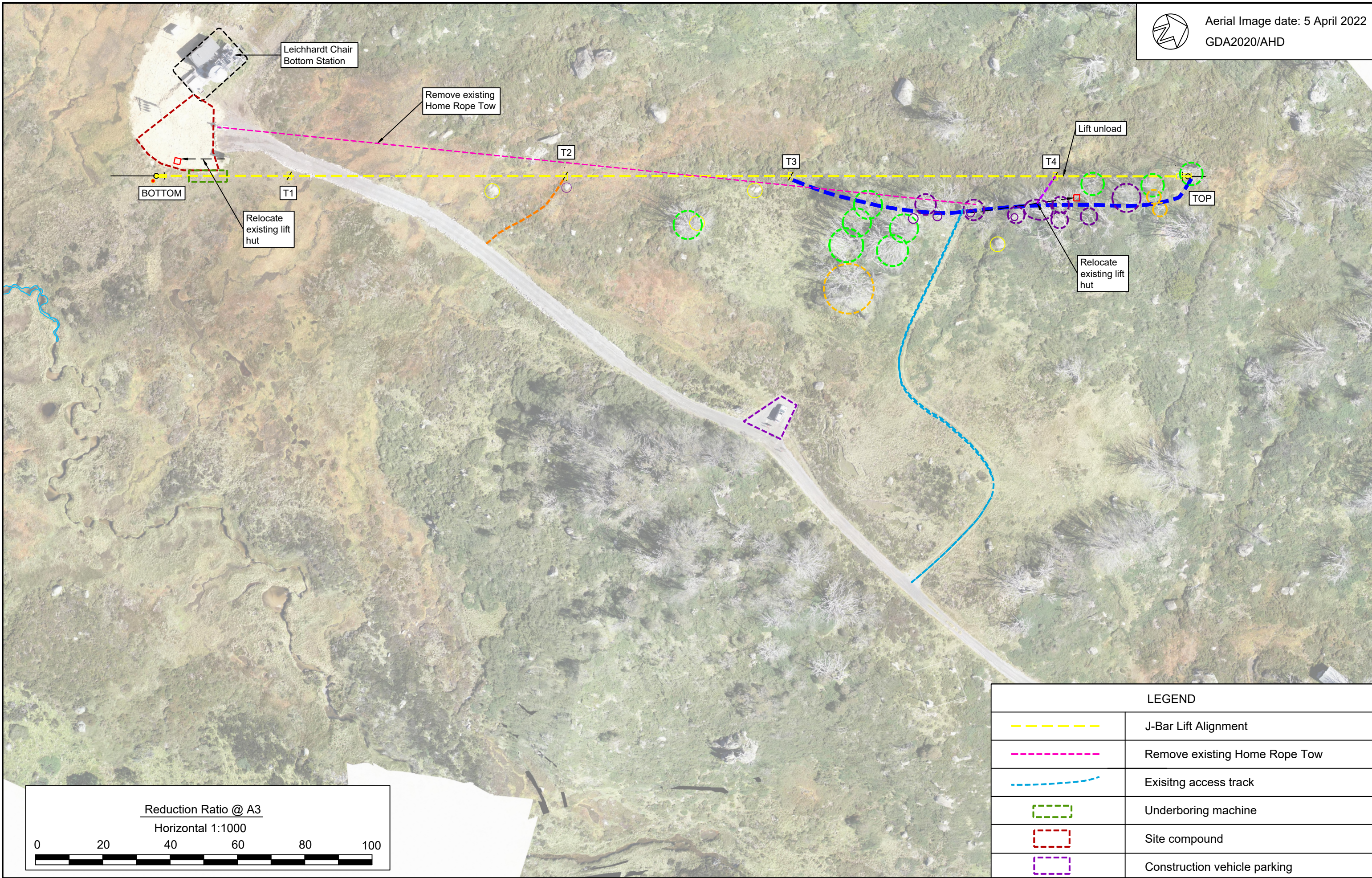
Rev	Date	Description
B	07/07/2022	DA Submission

Leichhardt J-Bar, Perisher Ski Resort
Replacement of Home Rope Tow + Ancillary Works

CLM CIVIL Engineering
205 Bobundara Road
BERRIDALE NSW 2628
PH: 0427 886 623
E: greg@clmcivil.com.au

Client: Vail Resorts (Perisher)

Plan - Top Station		Status: DA Submission	
Datum: MGA/AHD	Scale: 1:500	Size: A3	Revision: B
Drawing Number: U255-2	Sheet: 3 of 4		



Rev	Date	Description
B	07/07/2022	DA Submission

Leichhardt J-Bar, Perisher Ski Resort
Replacement of Home Rope Tow + Ancillary
Works

CLM CIVIL
CLM CIVIL Engineering
205 Bobundara Road
BERRIDALE NSW 2628
PH: 0427 886 623
E: greg@clmcivil.com.au



Client: Vail Resorts (Perisher)

Construction Management Plan

Status: DA Submission

Datum: MGA/AHD	Scale: 1:1000	Size: A3
Drawing Number: U255-2	Sheet: 4 of 4	Revision: B